

KARS KEY KLICKS



JOURNAL OF THE KANKAKEE AREA RADIO SOCIETY

Volume 92 Issue 6

Editors: K9NR, K9QT, N9IO
Photos: K9NR, K9QT, NV9L, KC8RP
Contributors: N9OE

June 2017

WB9Z INDUCTED INTO CQ DX HALL OF FAME AT HAMVENTION 2017!



Bob N200 (left) and Ralph K0IR (Right) Present Jerry Rosalius WB9Z (middle) with the CQ DX Hall of Fame Award
Photo compliments of Richard KC8RP

A visibly surprised Jerry Rosalius WB9Z was honored at the Hamvention DX Banquet by being inducted into the [CQ DX Hall of Fame](#). WB9Z is a life member of KARS. Congratulations Jerry!

The next KARS meeting will be June 6th, 7PM at the public meeting room in St. Mary's Hospital. Use the South Main Entrance

After the general meeting, there will be planning for Field Day and a Power Point presentation on Field Day. See you there!

The Kankakee Area Radio Society operates repeaters on:

146.34/.94 107.2 PL Access

449.8/444.8 100.0 PL Access

145.130 107.2 PL Access

Additionally, KARS sponsors:

144.39 2 Wide Area APRS digi-peaters

145.53 KARS DX Cluster - w9az.ddns.net

KARS FIELD DAY

Attention all KARS members:

Field Day setup will start at 10AM Saturday June 24th. KARS operations will commence at 1PM local and run around the clock till 1PM Sunday. We will be operating portable with emergency power. All members are invited to participate.

Camp all night if you like or come and go as you please.

Dues paying KARS members who participate in the setup, teardown, or operation are entitled to participate in the Saturday dinner cookout! The cookout will feature free burgers and brats (or whatever you prefer to bring) with Will K9FO manning the charcoal grill. **Remember to bring chairs**, (a small folding table is a good idea) table service, mosquito spray and beverage as well as a side dish or dessert to share with your fellow hams. See you at Field Day.

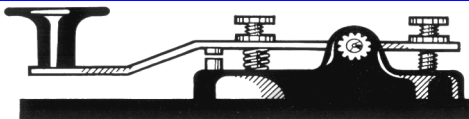
Check the [KARS Field Day page](#) for directions or check out the [ARRL Field Day operations map](#) on the League web page.

A big thank you to Kevin N9REG and his family for again hosting KARS Field Day at their lovely location. **Please don't drive on the grass.**

ARRL Field Day is the largest operating event in ham radio, so don't miss out!

KARSFEST!

JULY 16



W9AZ

TRANSMITTER HUNT

The next foxhunt will be Saturday, June 17th at **12:00PM**. Usual rules and start location apply. K9KSG to be the fox.

JOIN THE FUN AT ARRL FIELD DAY!

KARS HOMEPAGE— **WWW.W9AZ.COM** —KARS HOMEPAGE

IT'S FOXHUNT SEASON

KARS KALENDAR

- June 4.....[Starved Rock RC Hamfest](#)
- June 6.....[KARS General Meeting](#)
- June 10-12.....[ARRL June VHF QSO Party](#)
- June 17.....[Transmitter Hunt](#)
- June 18.....[6 Meter Club Hamfest](#)
- June 20.....[KARS Board Meeting](#)
- June 24-25.....[FIELD DAY](#)
- July 4.....[KARS General Meeting](#)
- July 8-9.....[IARU HF World Championship](#)
- July 9.....[Fox River Hamfest](#)
- July 15-16.....[CQ Worldwide VHF](#)
- July 15-16.....[NAQP RTTY](#)
- July 16.....[KARSFEST](#)
- July 18.....[KARS Board Meeting](#)

May 13th Hunt

May 27th Hunt



A few of the Hunters loaded and ready at the start
 N9RJM & WA9WAQ

N9FD, Terry & W9IEY

NCS FOR JUNE

The net meets every Monday at 8 PM local time on the 146.34/.94 repeater. All stations with or without traffic are invited to check in.

- June 5 N9RJM
- June 12 KD9CGC
- June 19 N9OE
- June 26 N9FD

Don't forget the net!

HAPPY BIRTHDAY

- June 2 W9EJM
- June 5 KD9CGC
- June 5 KD9CBG
- June 8 K9ABN
- June 10 N9OQC
- June 17 K9BKR
- June 20 KC9LBZ
- June 26 KF9DM
- June 26 W9IOU
- June 30 K9BAK

If we miss your birthday or get it wrong, please let us know!

TUNING THE BANDS

As we leave the Spring Equinox behind and move toward the summer Solstice, DXing on the HF bands often drops off a bit.

However, summertime 6 meter propagation is cranking up with openings from the Midwest to the deep south, the far western states, the east coast and even to Central and South America.

Single hop E Skip and occasional double hop is common now. Keep an eye (ear) on the Magic Band. Also, check out 2 meter SSB/CW for tropo propagation. Lots of fun to be had!



May 13 Foxes: N9BMB & K9QT



May 27 Foxes: N9BMB & N9DLD



May 13 Winners: N9OE & N9DLD



May 27 Winner: K9KSG

For Sale

IC-746 with 1.9khz and 350hz filters, A/T built in, 100 watts on 2m and 6-160m. Very clean in excellent condition. \$650

FT-857d with separation Kit and ATAS-120a

I purchased the FT-857d at Hamvention in 2012 from AES. Never been installed. I have only had it out of the box once after receiving it.

All pieces still in their cellophane as when it was shipped.

Radio has never been connected to power, it is NEW.

I purchased the sep kit a couple of years ago from an after market dealer on eBay.

The ATAS-120a antenna I used for 3 weeks, it replaced an ATAS-100 on a prior vehicle with my old FT-100d. A few weeks after the ATAS-120a was purchased I changed vehicles and again never installed it, the antenna is essentially new.

\$825 for the FT-857d, sep kit and ATAS-120a. ***These were originally \$1150***

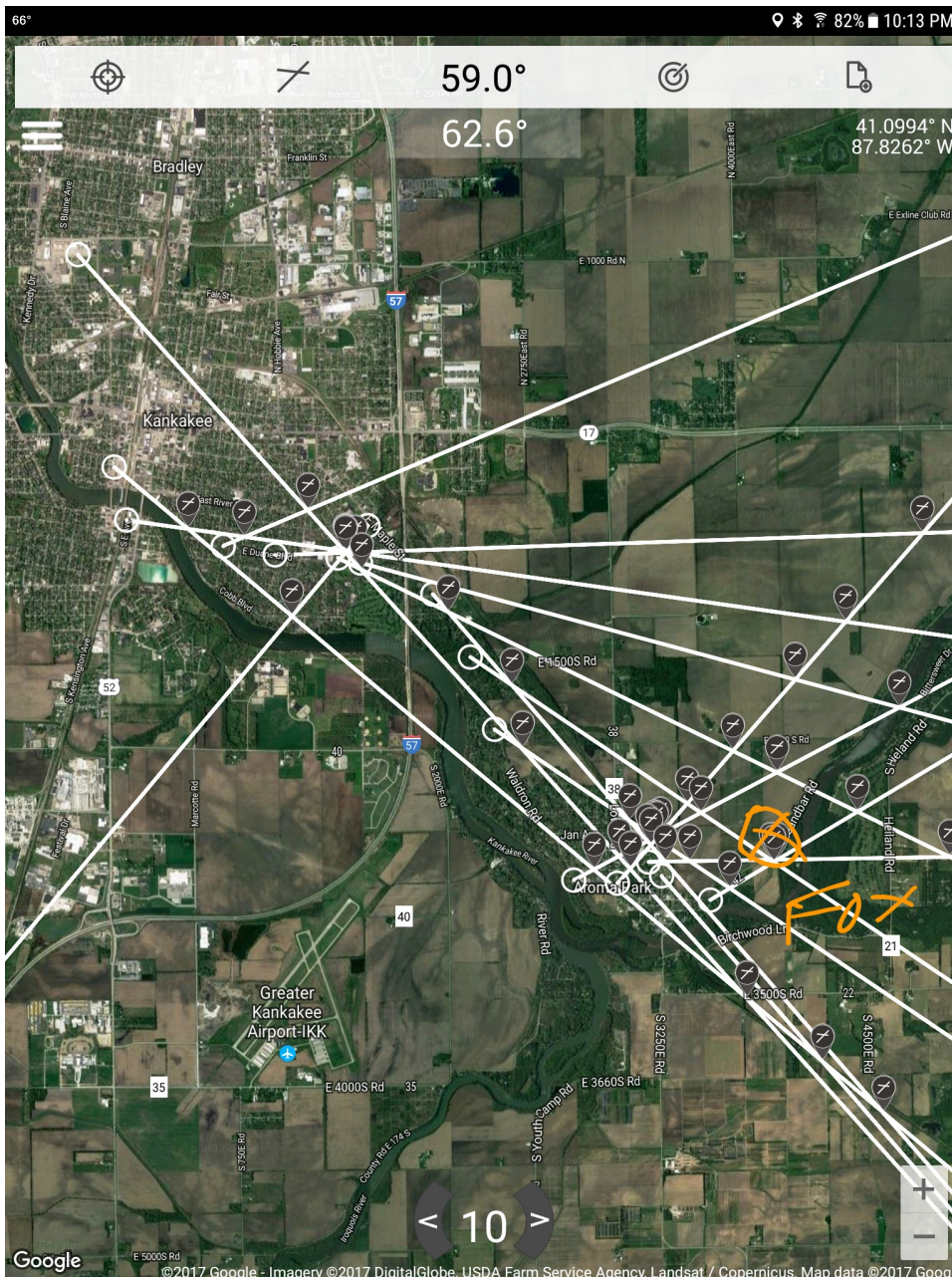
Email Clay N9IO n9io@hotmail.com

FOX HUNTING WITH THE DAU FAMILY

Here are our vectors from my Android tablet application - [SigTrax](#). This application helps my hunting partner (N9DLD) and I plot our vectors on a map. This is done manually but it shows our current position on a Google Earth satellite view and allows for zoom and pan of any area. The advantage is that it displays a lot of detail that we may otherwise not be aware of. It's easy to look ahead to where the vectors are pointing, see what is out there and routes to avoid. This is far superior to the paper maps we used when I first started hunting over 20 years ago. If you follow my path to the fox you can see how the signals were, in many cases, unreliable and tricky. Several of them must have been from reflections since they were going the wrong way. However, the majority are pointing in the general area of the fox!

There is a lot of judgment and interpretation involved in making the right decisions in a low mileage hunt. With the river and interstate highway in our area, it is easy to make a bad decision that could add several miles to your score! It seems that water, terrain, buildings and other objects may effect how the signal propagates and is received by your foxhunting gear. It's easy to commit yourself down a path that will add a lot of miles so you have to be sure that you can trust the signals enough to make that decision. Also, be careful of power line interference! In some cases, pointing your antenna at a noisy power line will cause s-meter movement.

Be sure you know and can trust your equipment. I use a 5 element, short boom yagi with a folded dipole feed point



that works very well. The antenna is lightweight, compact and has good forward gain with relatively small side lobes and a decent forward to back ratio. I use a homemade attenuator but rarely need more than 10 db of attenuation since I use my rigs built in attenuation first! I use an Icom IC-7000 on 2 meters for foxhunting and it works great. The receiver has decent selectivity and high sensitivity without making every signal full scale (this is important when hunting...since your rig is constantly reporting most strong signals as full scale, you will require more attenuation than usual). Also, while the S-meter is a digital bar graph like you see on most HF rigs, it has many discrete meter segments that help you dial in your direction accurately. Typically, I start the hunt with the built in preamp on and turn it off when the fox signal peaks at S9. Then, as I move in closer and the signal peaks at S9 again, I switch in the built in attenuation. After that, I only need about another 10-20 dB of external attenuation before I have the fox in my sights!

That's why decent equipment you can trust, sound judgment and patience is key in making the right decisions in the hunt for the elusive fox! [Note: [Sigtrax](#) is for both Android and IOS devices]

Bill N9OE

KARS BOARD MEETING

The Board Meeting will be held on June 20th in the private dining room at El Mexicano's Restaurant by the Hilton Hotel and Walmart south of town near the I-57 exit. Eat at 6 P.M. Meeting at 7 P.M. All members and spouses are welcome.